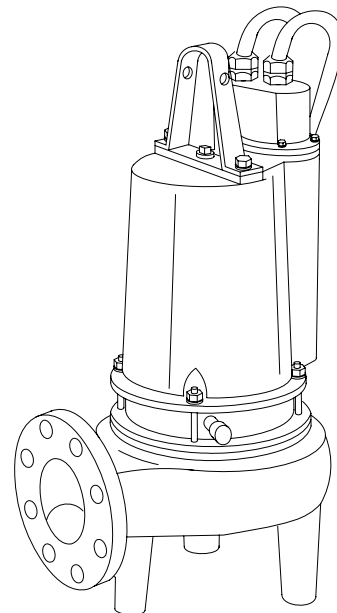


4" Horizontal Discharge - Submersible Non-Clog Pumps

DISCHARGE4" 125lb., Flange Horizontal
LIQUID TEMPERATURE104°F (40°C) Continuous
VOLUTECast Iron ASTM A-48, Class 30
MOTOR HOUSINGCast Iron ASTM A-48, Class 30
SEAL PLATECast Iron ASTM A-48, Class 30
IMPELLER:	
<i>Design</i>2 Vane, Open with pump out vanes on back side, Dynamically Balanced, ISO G6.3
<i>Material</i>Cast Iron ASTM A-48, Class 30
SHAFT416 Stainless Steel
SQUARE RINGSBuna-N
DIAPHRAGMBuna-N
HARDWARE300 Series Stainless Steel
PAINTAir Dry Enamel
SEAL:	
<i>Design</i>Double Mechanical, Oil filled pressure equalized reservoir
<i>Material</i>Carbon/Ceramic/Buna-N
	Hardware - 300 Series Stainless
CORD ENTRY40 ft. (12.1 m) Cord. Epoxy Sealed Housing with secondary pressure grommet for sealing and strain relief
SPEED1150 or 1750 RPM (Nominal)
UPPER BEARINGSingle Row, Ball, Oil Lubricated
<i>Load</i>Radial
LOWER BEARINGSingle Row, Ball, Oil Lubricated
<i>Load</i>Radial & Thrust
MOTOR:	
<i>Design</i>NEMA L- Single Phase, NEMA B - Three Phase Torque Curve, Oil Filled, Squirrel Cage Induction
<i>Insulation</i>Class B
SINGLE PHASEPermanent Split Capacitor (PSC) Includes Overload Protection in Motor
THREE PHASE200-230/460 is Tri Voltage motor. Requires Overload Protection to be included in Control Panel
MOISTURE SENSORNormally Open (N/O), Requires relay in control panel
TEMPERATURE SENSORNormally Closed (N/C), Requires relay in control panel. For three phase units ONLY
OPTIONAL EQUIPMENTSeal Material, Impeller Trims, Additional Cord



Series: 4SE 1.9 & 2.8HP,
1150RPM, 60Hz
Series: 4SE 2.8, 3.7, 5.0HP,
1750RPM, 60Hz



Sample Specifications: Section 1 Page 11.

DESCRIPTION:

SUBMERSIBLE NON-CLOG SEWAGE PUMP
DESIGNED FOR TYPICAL RAW SEWAGE
APPLICATIONS

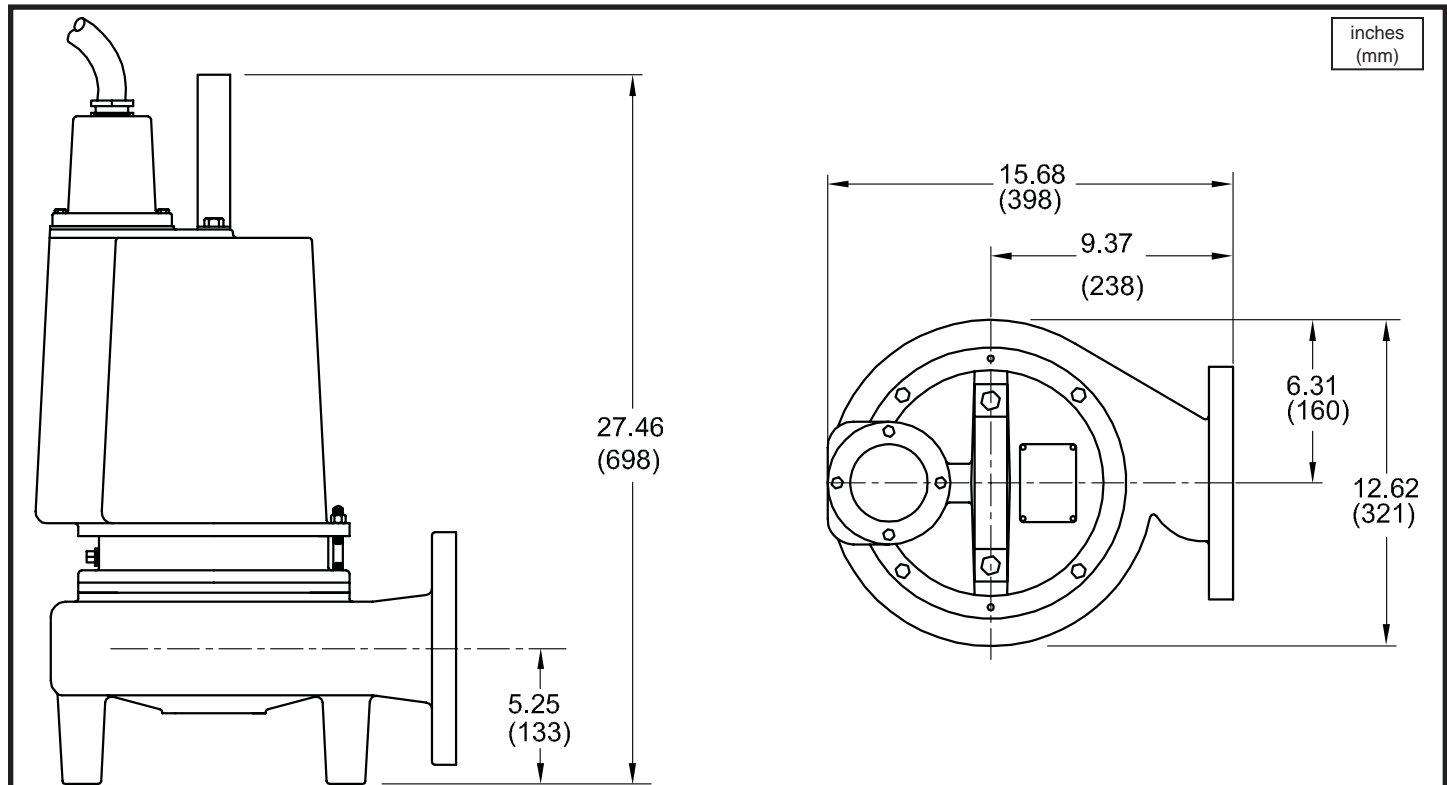
Series 4SE-L

3" Spherical Solids Handling
Double Seal

BARNES®

www.cranepumps.com

4" Horizontal Discharge - Submersible Non-Clog Pumps



MODEL NO	PART NO	HP	VOLT/PH	Hz	RPM (Nom)	NEMA START CODE	FULL LOAD AMPS	LOCKED ROTOR AMPS	CORD SIZE	CORD TYPE	CORD O.D. inch (mm)
4SE1926L	084602	1.9	230/1	60	1150	D	8.3	35.0	10/3	SOW	0.690 (17.5)
4SE1996L	084604	1.9	200-230/3	60	1150	E/G	5.8/5.0	26.1/30.0	10/4	SOW	0.750 (19.1)
4SE1946L	084605	1.9	460/3	60	1150	G	2.5	15.0	10/4	SOW	0.750 (19.1)
4SE1956L	089300	1.9	575/3	60	1150	G	2.0	12.0	10/4	SOW	0.750 (19.1)
4SE2826L	088825	2.8	230/1	60	1150	A	13.5	31.0	10/3	SOW	0.690 (17.5)
4SE2896L	088826	2.8	200-230/3	60	1150	F/H	9.2/8.4	38.2/44.0	10/4	SOW	0.750 (19.1)
4SE2846L	088827	2.8	460/3	60	1150	H	4.2	22.0	10/4	SOW	0.750 (19.1)
4SE2856L	088828	2.8	575/3	60	1150	H	3.4	17.6	10/4	SOW	0.750 (19.1)
4SE2824L	084606	2.8	230/1	60	1750	A	12.6	23.0	10/3	SOW	0.690 (17.5)
4SE2894L	084608	2.8	200-230/3	60	1750	D/H	9.2/8.0	35.9/42.7	10/4	SOW	0.750 (19.1)
4SE2844L	084609	2.8	460/3	60	1750	G	4.0	18.0	10/4	SOW	0.750 (19.1)
4SE2854L	089301	2.8	575/3	60	1750	F	3.2	14.4	10/4	SOW	0.750 (19.1)
4SE3724L	084610	3.7	230/1	60	1750	A	20.0	29.0	10/3	SOW	0.690 (17.5)
4SE3794L	084611	3.7	200-230/3	60	1750	B/E	12.6/10.9	35.9/42.7	10/4	SOW	0.750 (19.1)
4SE3744L	084612	3.7	460/3	60	1750	E	5.4	21.3	10/4	SOW	0.750 (19.1)
4SE3754L	089302	3.7	575/3	60	1750	G	5.6	21.6	10/4	SOW	0.750 (19.1)
4SE5024L	088821	5.0	230/1	60	1750	A	28.0	59.0	10/3	SOW	0.690 (17.5)
4SE5094L	088822	5.0	200-230/3	60	1750	B/D	20.9/19.0	48.6/56.0	10/4	SOW	0.750 (19.1)
4SE5044L	088823	5.0	460/3	60	1750	D	9.0	28.0	10/4	SOW	0.750 (19.1)
4SE5054L	088824	5.0	575/3	60	1750	E	8.3	23.0	10/4	SOW	0.750 (19.1)

Moisture/Temperature sensor cord for all phase models is 18/5 SOW, 0.476 (12.1mm) O.D.

IMPORTANT !

- 1.) PUMP MAY BE OPERATED "DRY" FOR EXTENDED PERIODS WITHOUT DAMAGE TO MOTOR AND/OR SEALS.
- 2.) THIS PUMP IS APPROPRIATE FOR THOSE APPLICATIONS SPECIFIED AS CLASS I DIVISION II HAZARDOUS LOCATIONS.
- 3.) THIS PUMP IS NOT APPROPRIATE FOR THOSE APPLICATIONS SPECIFIED AS CLASS I DIVISION I HAZARDOUS LOCATIONS.
- 4.) INSTALLATIONS SUCH AS DECORATIVE FOUNTAINS OR WATER FEATURES PROVIDED FOR VISUAL ENJOYMENT MUST BE INSTALLED IN ACCORDANCE WITH THE NATIONAL ELECTRIC CODE ANSI/NFPA 70 AND/OR THE AUTHORITY HAVING JURISDICTION. THIS PUMP IS NOT INTENDED FOR USE IN SWIMMING POOLS, RECREATIONAL WATER PARKS, OR INSTALLATIONS IN WHICH HUMAN CONTACT WITH PUMPED MEDIA IS A COMMON OCCURRENCE.

SECTION 1D
PAGE 8
DATE 7/07

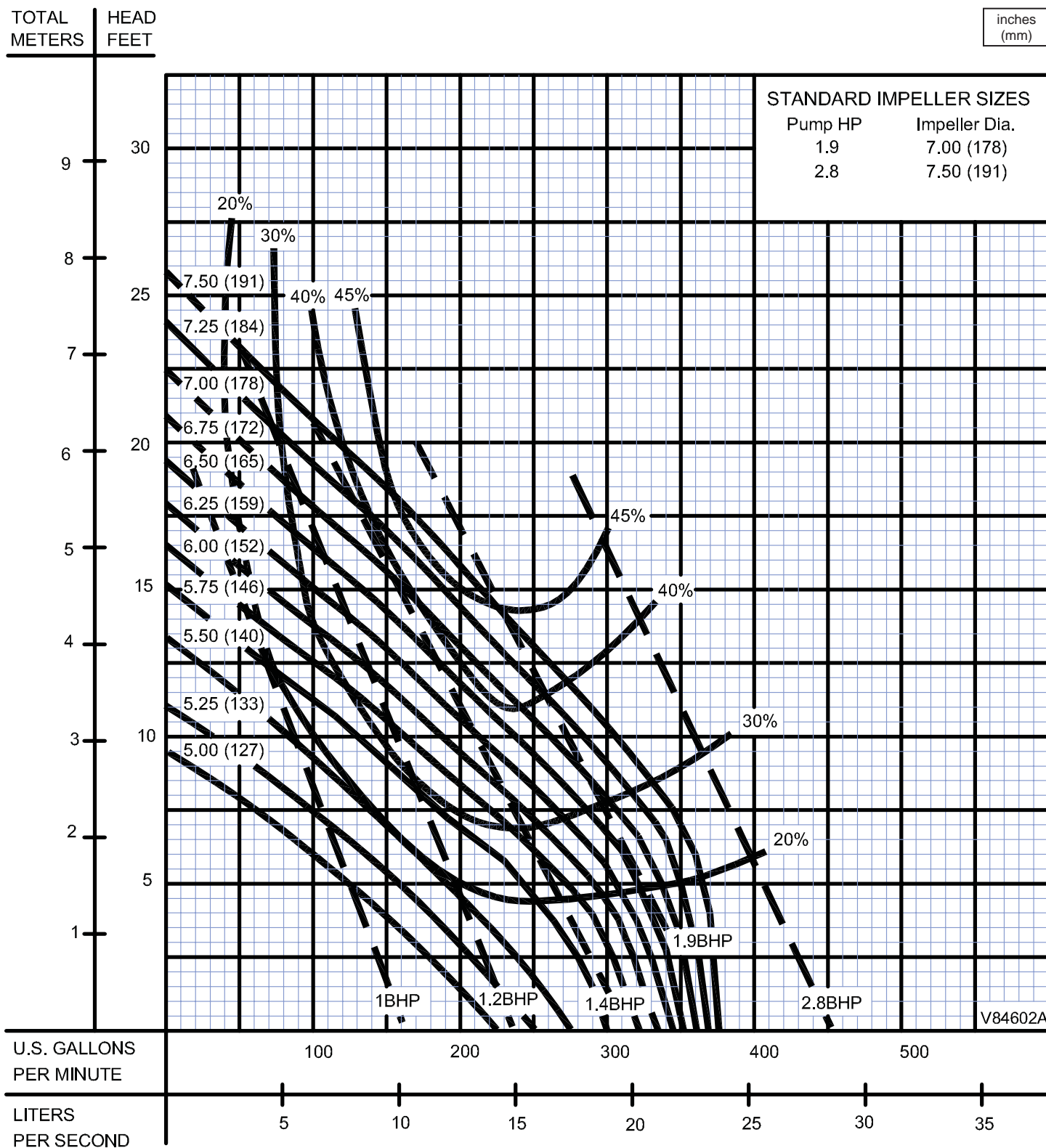
CRANE®

A Crane Co. Company

PUMPS & SYSTEMS

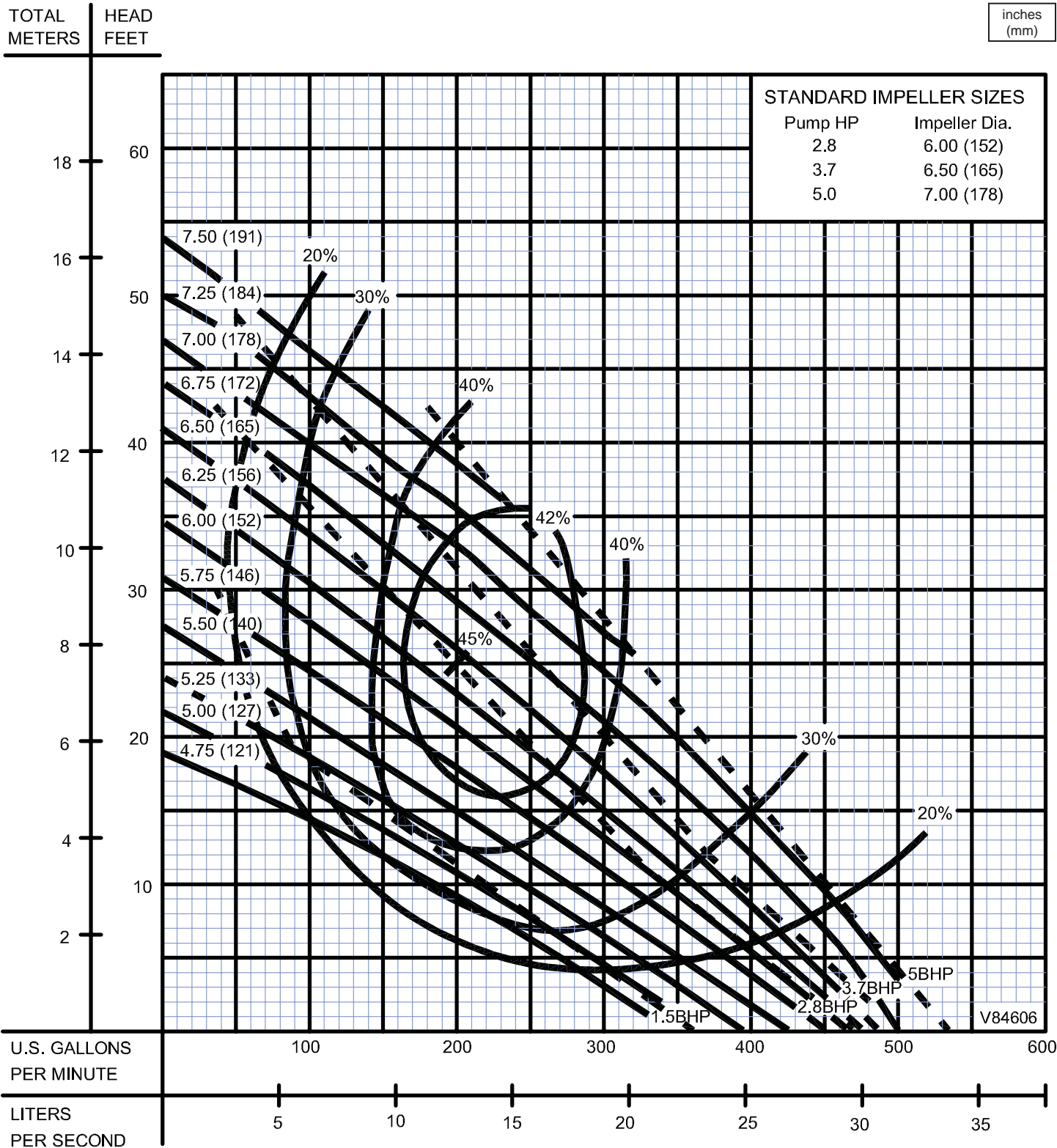
USA: (937) 778-8947 • Canada: (905) 457-6223 • International: (937) 615-3598

4" Horizontal Discharge - Submersible Non-Clog Pumps



Testing is performed with water, specific gravity 1.0 @ 68° F @ (20°C), other fluids may vary performance

4" Horizontal Discharge - Submersible Non-Clog Pumps



Testing is performed with water, specific gravity 1.0 @ 68° F @ (20°C), other fluids may vary performance